

*Paracanthonchus spectabilis* Allgén, 1931

(Fig. 121)

*Description* (from Stekhoven and Adam, 1931). Body length 1.5–2.4 mm: a = 26–33. Cuticle with transverse rows of dots; without lateral differentiation; longitudinal files of pores (Fig. 121A). Longer cephalic setae 0.5 h.d. Amphids of 5 turns, 0.3–0.4 c.d. Buccal cavity with large dorsal tooth. Tail 3.5 a.b.d., conical.

Spicules 1.0 a.b.d, slightly cephalate proximally. Gubernaculum widens distally 'with teeth'. Two small and four larger precloacal supplements, the anteriormost 3.5 a.b.d. from cloaca (Fig. 121B).

*Distribution.* Skippers Island, Essex (intertidal mud); Isles of Scilly (kelp holdfast).

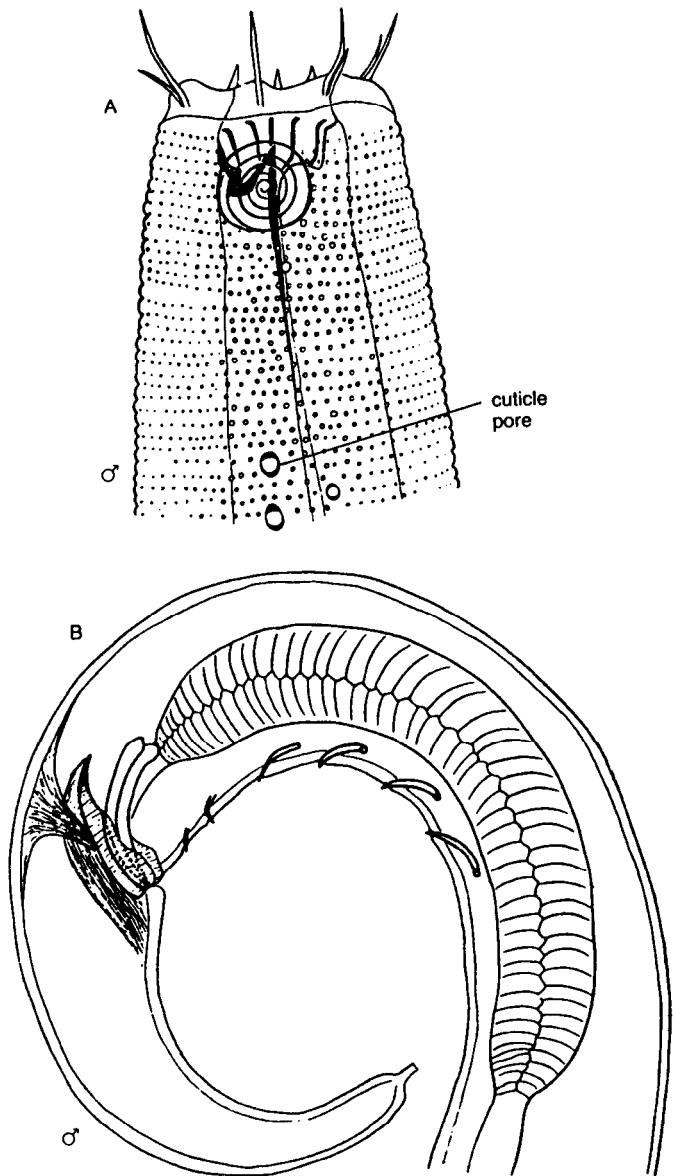


Fig. 121. *Paracanthonchus spectabilis*. A, Male head; B, Male tail. From Stekhoven (1935).