

Oxystomina elongata (Bütschli, 1874)
(Fig. 86)

Description. Body length 1.8–2.0 mm. Maximum diameter 35–38 μm ($a = 47\text{--}56$). Cuticle smooth. Six cephalic setae 2.5 μm . Four cervical setae the same length, 2.75 h.d. from anterior. No buccal cavity. Amphids typical of genus, 3.5 μm wide, 29–30 μm from anterior in male, smaller and more rounded in female. Oesophagus 0.24 times body length, slender, with small posterior bulb. Ventral gland small, oval; excretory pore one-third of way down oesophagus length, surrounded by a cuticular ring. Tail 5 a.b.d. long, clavate.

Spicules 36–38 μm long (arc), with a slight bump ventrally just before the proximal tip.

Gubernaculum small and curved, enclosing spicule tips. One long and one short seta in front of cloaca.

Distribution. Blyth estuary; Skippers Island, Essex; Exe estuary (intertidal mud and muddy sand).

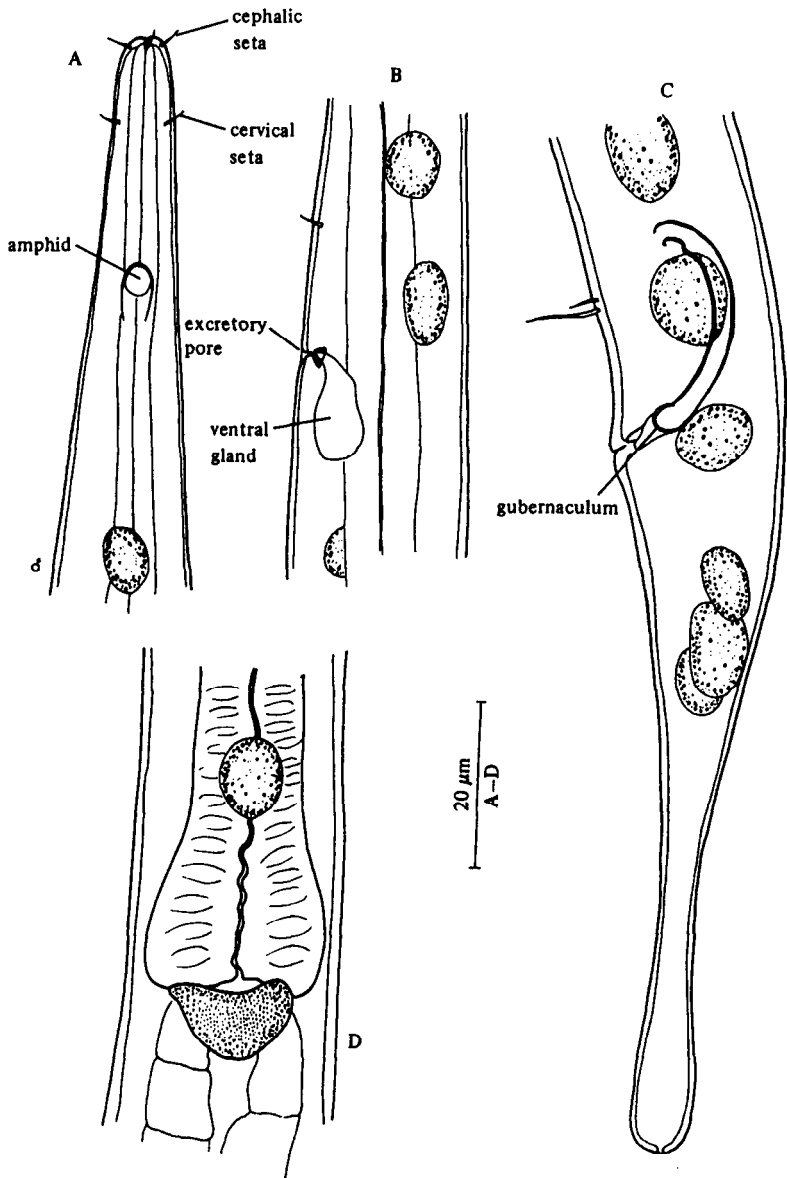


Fig. 86. *Oxystomina elongata*. A, Male head; B, Region of excretory pore; C, Male tail; D, Oesophageal bulb. Original.