

Nannolaimoides effilatus (Boucher, 1976) comb. nov.
(Fig. 112)

Description (from Boucher, 1976). Body length 1.9–2.2 μm ($a = 57\text{--}58$). Cuticle with transverse rows of fine punctations, alternate rows linked by transverse bars; lateral differentiation absent except in the post-anal conical region of the tail where a single lateral file of punctations is present. Six 6 μm labial setae; ten cephalic setae, the longer six 12.5–15 μm (0.5–0.6 h.d.). Amphids of 5.5 turns, 11–12 μm (0.4 c.d.) wide. Buccal cavity with pointed dorsal tooth and two smaller subventral teeth. Tail 10–11 a.b.d. in male, 12 a.b.d. in female, conico-cylindrical with conical portion only 20% of total length.

Spicules 50 μm (1.8 a.b.d.), thin at both ends and inflated in middle. Gubernaculum 25–26 μm . Small precloacal spine and 10–14 precloacal supplements, apparently with cuticle ridges between them similar to *Pomponema*.

Distribution. Firth Clyde, West Scotland (intertidal sand).

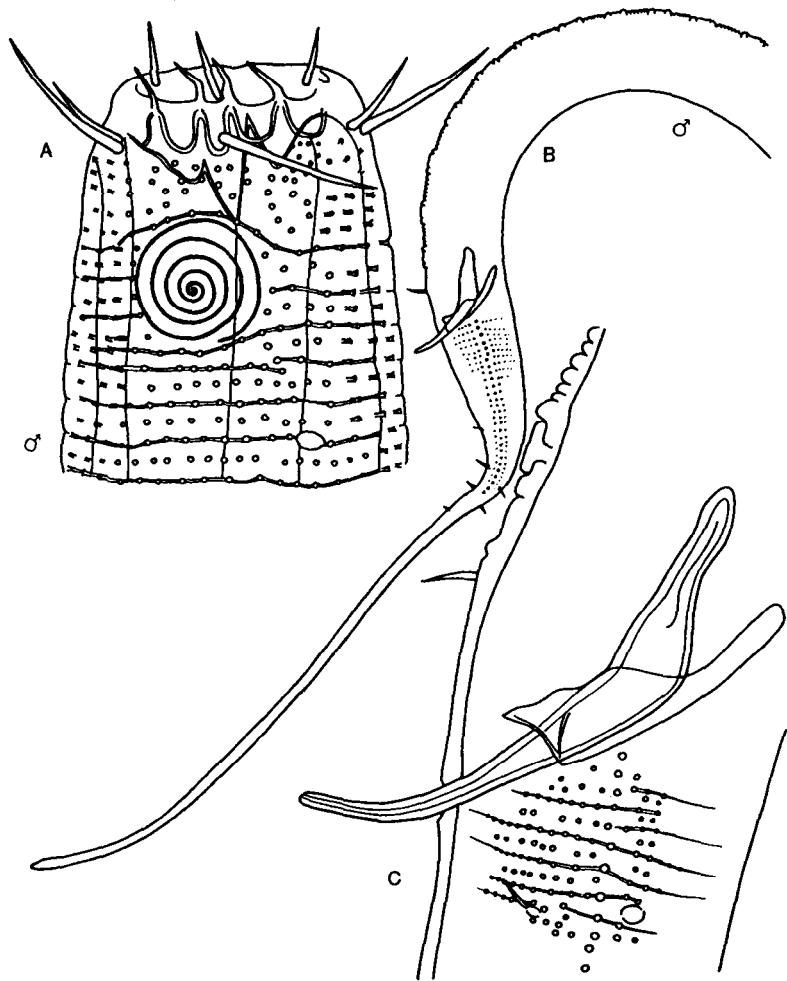


Fig. 112. *Nannolaimoides effilatus*. A, Male head; B, Male tail; C, Cloacal region.
From Boucher (1976).