

*Microlaimus conothesis* (Lorenzen, 1973a)  
(Fig. 179)

*Description* (from Lorenzen, 1973a). Body length 1.4–1.8 mm: a = 42–69. Six 3.5  $\mu\text{m}$  and four longer 8.5–9  $\mu\text{m}$  cephalic setae. Two sublateral files of short somatic setae down the length of the body, somewhat longer in the cervical and caudal regions. Amphids 0.5 c.d. wide in the male, 0.4 c.d. in the female, situated 0.6 h.d. posterior. Buccal cavity with a medium sized dorsal and smaller subventral teeth: peribuccal bulb well developed. Tail about 3.2 a.b.d.

Spicules 28–32  $\mu\text{m}$ . Gubernaculum curved proximally and free from spicules, distally with lateral flanges. 3–4 conical precloacal supplements.

*Distribution.* Firth of Clyde, West Scotland (intertidal sand).

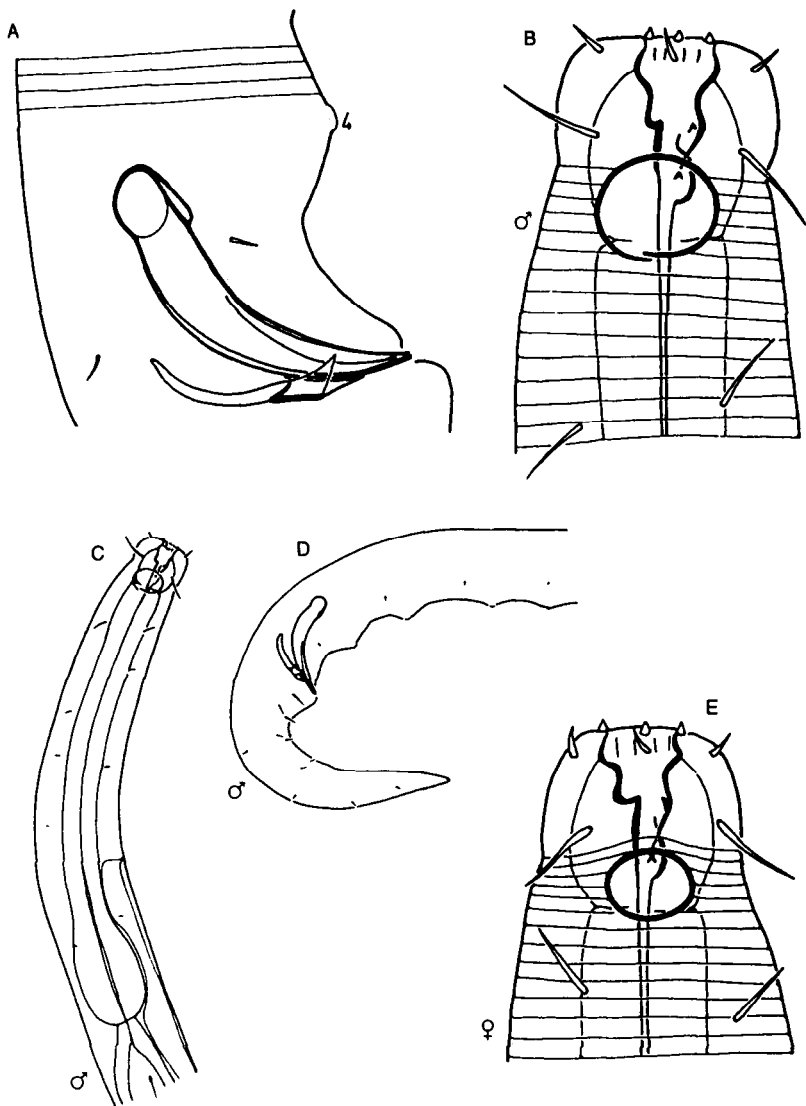


Fig. 179. *Microlaimus conothelis*. A, Cloacal region; B, Male head; C, Anterior end of male; D, Male tail; E, Female head. From Lorenzen (1973a).