

*Microlaimus acinaces* Warwick and Platt, 1971  
(Fig. 178)

*Description.* Body length 1.0–1.2 mm. Maximum diameter 27–30  $\mu\text{m}$  ( $a = 35\text{--}39$ ). Head restricted just posterior to long cephalic setae. Six 2.0–2.5  $\mu\text{m}$  and four 11–12  $\mu\text{m}$  (0.9 h.d.) cephalic setae. Four 7–8  $\mu\text{m}$  cervical setae posterior to amphids. Amphids 8  $\mu\text{m}$  (0.6 c.d.) wide, 0.8 h.d. posterior. Buccal cavity with a large dorsal and two smaller subventral teeth: peribuccal bulb well-developed. Posterior oesophageal bulb  $25 \times 19 \mu\text{m}$ . Tail 3–4 a.b.d.

Spicules 27–28  $\mu\text{m}$  (1.1–1.3 a.b.d.), sickle-shaped with a rounded proximal cephalisation. Gubernaculum 21–23  $\mu\text{m}$ , proximally curved and free from spicules. Four small pore-like precloacal supplements (Fig. 178B) and two files of nine subventral precloacal cuticularised ducts which emanate from subcuticular glands (Fig. 178B). Tail with two subventral files of 7–8  $\mu\text{m}$  setae.

*Distribution.* Loch Ewe, West Scotland; Firth of Clyde, West Scotland (inter-tidal sand).

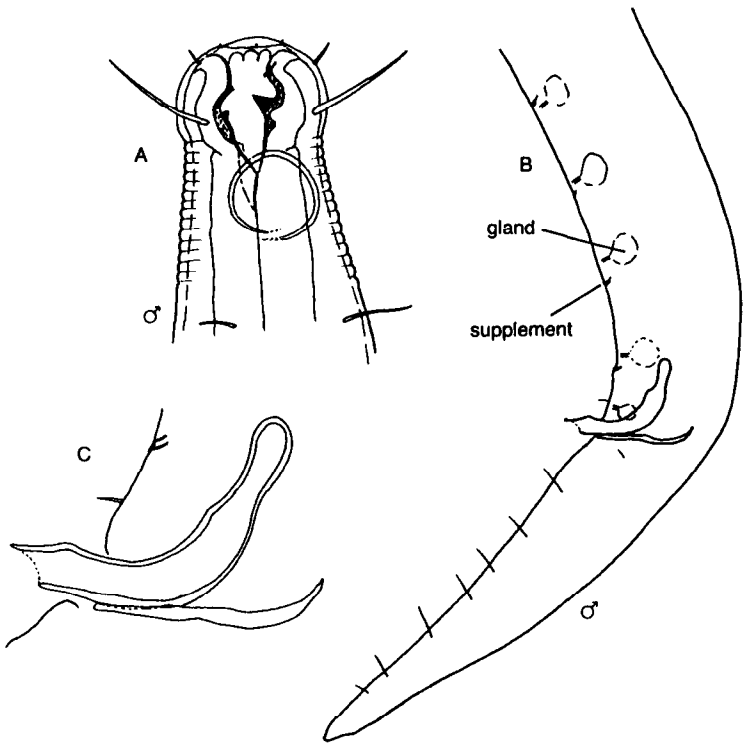


Fig. 178. *Microlaimus acinaces*. A, Male head; B, Male tail; C, Cloacal region. Original.