

***Microlaimus latilaimus* n. sp.**

Fig. 158 a, b

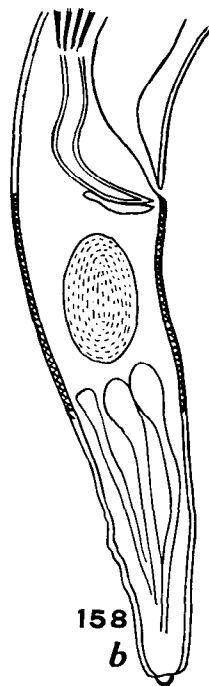
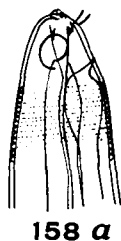
Locality and material. — Falkland Islands, St. 49: 1 ♂

Dimensions: $L = 1,650$ mm., $a = 28,95$, $\beta = 8,78$, $\gamma = 11,15$

From the same station 49 in the Falklands another species was recorded, with a moderately slender body, on the whole evenly thick and tapering only scarcely noticeably in its oesophageal region. Cuticle finely annulated. Head rounded, provided with 4 submedian, slender bristles, measuring half the corresponding head diameter at their level. Buccal cavity short, about cylindrical, rather *spacious*, far anteriorly armed with an acute dorsal tooth. Lateral organs situated at the base of the buccal cavity, rounded, posteriorly interrupted and large, measuring in transverse section $8,2 \mu$, i. e. $4/9$ of the corresponding head diameter. Oesophagus increasing only gradually towards the posterior end and, behind its middle, surrounded by the nerve ring in a distance of 65μ caudad to the posterior end of the oesophagus. Ventral gland rather small, pyriform, its duct, strongly swollen, opening at the level of the lateral organs, in a distance of about $16,39 \mu$ behind the front end. Tail conical, provided with a short end tip and containing a large, granulated gland.

Spicules slender, irregularly curved. Accessory piece directed dorsally.

St. 49. Falkland Islands. Berkeley Sound. $51^{\circ} 35' S.$ — $57^{\circ} 56' W.$ Shells and stones. 25—30 m. 10. 8. 1902.
Number of species found: 27; Number of specimens found: 58.



158. *Microlaimus latilaimus* n. sp. a. Anterior end, b. Tail, $\times 450$