

Metoncholaimus scanicus (Allgén, 1935)

(Fig. 96)

Description. Body length 9.4–10.9 mm. Maximum diameter 110–118 μm ($a = 85\text{--}93$). Cuticle smooth. Six small labial papillae. Ten cephalic setae; six 12.5–15 μm (0.30–0.38 h.d.); four 11–13 μm (0.26–0.31 h.d.). Buccal cavity similar to *M. albidus*. Amphids level with dorsal tooth, 13–15 μm wide. Excretory pore and nerve ring at about 0.20–0.23 and 0.41–0.45 times oesophagus length from anterior respectively. Oesophagus 0.08–0.09 times body length. Tail same shape in both sexes, 3.2–3.5 a.b.d.

Spicules slender, straight, 93–110 μm (1.9 a.b.d.). Small gubernaculum present at tip of spicules. About 12 pairs of setae around cloaca. Two pairs of short subventral setae about two-thirds of tail length from cloaca.

Two opposed testes.

Single anterior ovary. Vulva at about 69% of body length. Paired lateral pores of demanian system situated about 5 a.b.d. from anus and uvette about 680 μm (12 a.b.d.) from anus.

Distribution. Isles of Scilly (subtidal sand and among hydroids, bryozoa, etc.).

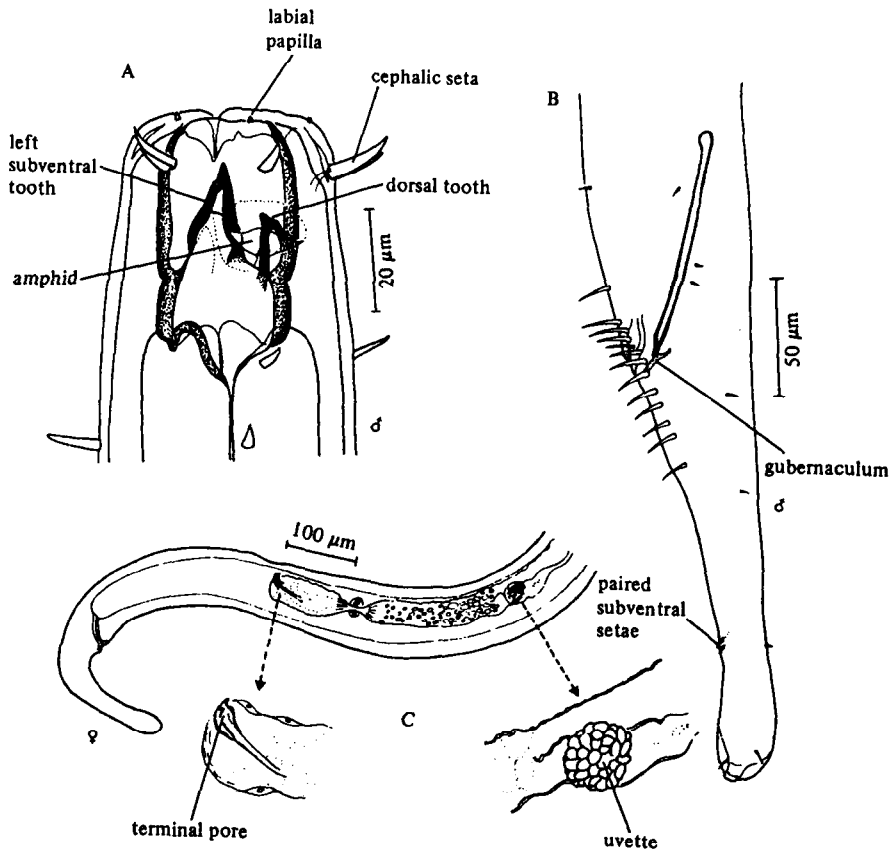


Fig. 96. *Metoncholaimus scanicus*. A, Male head; B, Male tail; C, Posterior end of female with details of demanian system. Original.