

Metalinhomoeus leptosoma n. sp.

Fig. 220 a, b

Locality and material. — South Georgia, St. 34: 1 juv.

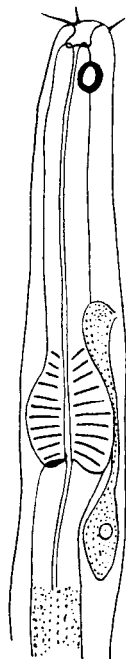
Dimensions: $L = 2,147$ mm., $a = 65,06$, $\beta = 15,34$, $\gamma = 8,588$

Body very slender and about evenly thick. Cuticle thin and smooth. Head truncate to rounded, provided with 2 lateral and 4 submedial bristles, measuring about half the corresponding head diameter. Lateral organs 10—13 μ behind front end, circular, in section 6 μ , i. e. 0,3 of the corresponding head diameter. Oesophagus with a strongly developed, muscular bulb; immediately behind that the very small ventral gland, opening shortly behind the middle of the oesophagus; before the opening its duct is ampullary swollen.

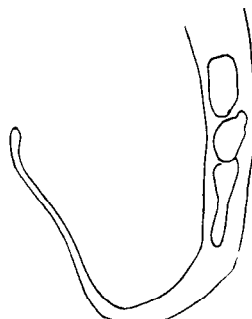
Tail elongated slender, cylindrical, tapering in its anterior half conically and posteriorly uniformly more thinned.

St. 34. South Georgia. Off the mouth of the Cumberland-Bay. 54° 11' S. — 36° 18' W. Grey clay with a few stones. 250—310 m. Bottom temp. + 1,45 C. 5. 6. 1902.

Number of species found: 38; Number of specimens found: 224.



220 a



220 b