

Haliplectus dorsalis Cobb in Chitwood, 1956
(Fig. 211)

Description (from Lorenzen, 1969). Body length 0.7 mm: a = 23–26. Cephalic sensilla absent. Amphid 3.5–4 μm wide. Tail in male 1.8 μm , in female 3.2–3.5 a.b.d.

Spicules 24–25 μm , arcuate. One ventral papilla just anterior to the cloaca and a group of three further forward, situated on a single cuticle elevation (Fig. 211A).

Vulva (Fig. 211E) at 44–46% of body length.

Distribution. Skippers Island, Essex (intertidal mud).

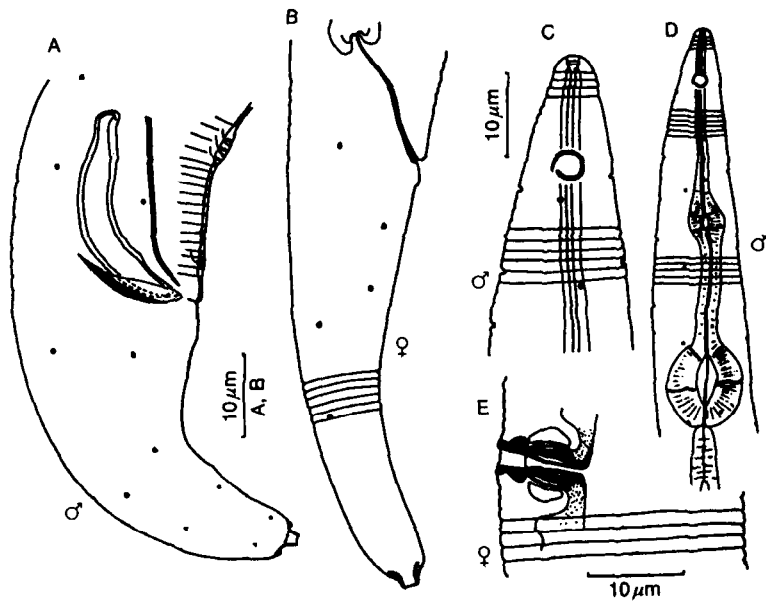


Fig. 211. *Haliplectus dorsalis*. A, Male tail; B, Female tail; C, Male head; D, Anterior end of male; E, Vulva. From Lorenzen (1969).