

Halichoanolaimus dolichurus Ssaweljev, 1912
(Fig. 138)

Description. Body length 3.2–3.5 mm. Maximum diameter 96–108 μm ($a = 30\text{--}36$). Head similar to that of *H. robustus* (p. 300). Ten cephalic sensilla papilliform, conical, small. Amphids of 3.75 turns, 19 μm (0.3 c.d.) wide, transversely oval. Tail 5.4–7.0 a.b.d. with a long filiform posterior portion which is finely striated, not punctated (Fig. 138B). Cuticular dots particularly coarse and widely spaced at junction of conical and cylindrical sections of tail.

Spicules 94–97 μm (1.6 a.b.d.), proximal ends variable in shape, more often rounded than square as they are in the illustrated specimen (Fig. 138C), always with a distinctive ventral swelling near the distal tip. Gubernaculum a pair of doubly curved rods 39 μm long. Seven conical mid-ventral precloacal papillae.

Distribution. North East coast of England (kelp holdfasts); Loch Etive, West Scotland (sublittoral sediments); Celtic Sea (sublittoral muddy-sand).

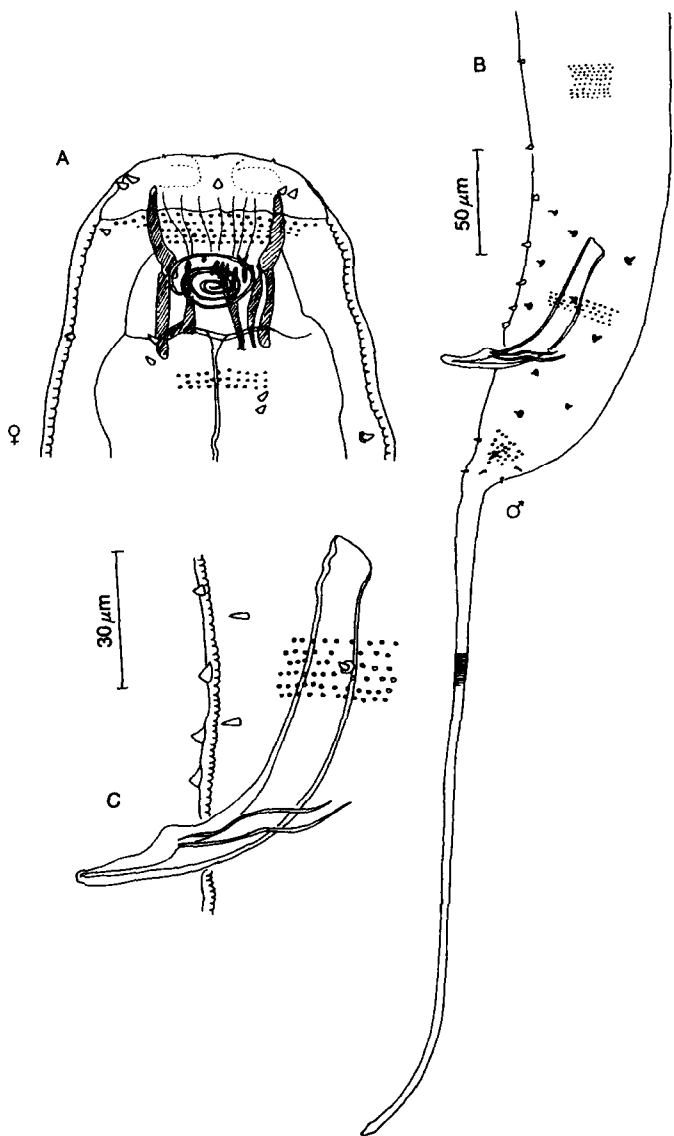


Fig. 138. *Halichoanotaimus dolichurus*. A, Female head; B, Male tail; C, Cloacal region. Original.