

Eurystomina ornata (Eberth, 1863)
(Fig. 115)

Description. The following description is based on a male (first measurement) and a female from the North Sea.

Body length 3.5, 4.3 mm. Maximum diameter 44, 58 μm ($a \approx 79, 75$). Cuticle smooth. Short but conspicuous cervical setae anterior to nerve ring, otherwise somatic setae absent. Six labial papillae. Ten cephalic setae in one circle; six 7.5, 11 μm (0.4, 0.5 h.d.) and four 5, 6 μm (0.3, 0.3 h.d.). Amphids a reniform loop, width about one-third of c.d. and lying dorso-sublaterally. Ocelli present, lying 1.6 h.d. from anterior, consisting of orange granules. Buccal cavity divided into two sections by rows of denticles; two distinct fairly regular rows in both sexes plus an extra more irregular row in the female. Large right subventral tooth but other teeth inconspicuous. Excretory pore opens level with the amphid. Nerve ring 0.4 times oesophagus length from anterior. Tail conical, 2.2, 4.1 a.b.d. Caudal glands extend anterior to anus.

Spicules 120 μm (arc).

Gubernaculum 38 μm . Two cuticularised winged supplements 1.7 and 2.9 a.b.d. from cloaca. Two opposed testes.

Two opposed reflexed ovaries. Vulva at 57% of body length.

Distribution. West Ireland (intertidal amongst *Spirorbis* tubes and sublittoral in sand and shells); Plymouth (intertidal weed); Northumberland (kelp holdfasts); Isles of Scilly (kelp holdfasts and amongst other weeds).

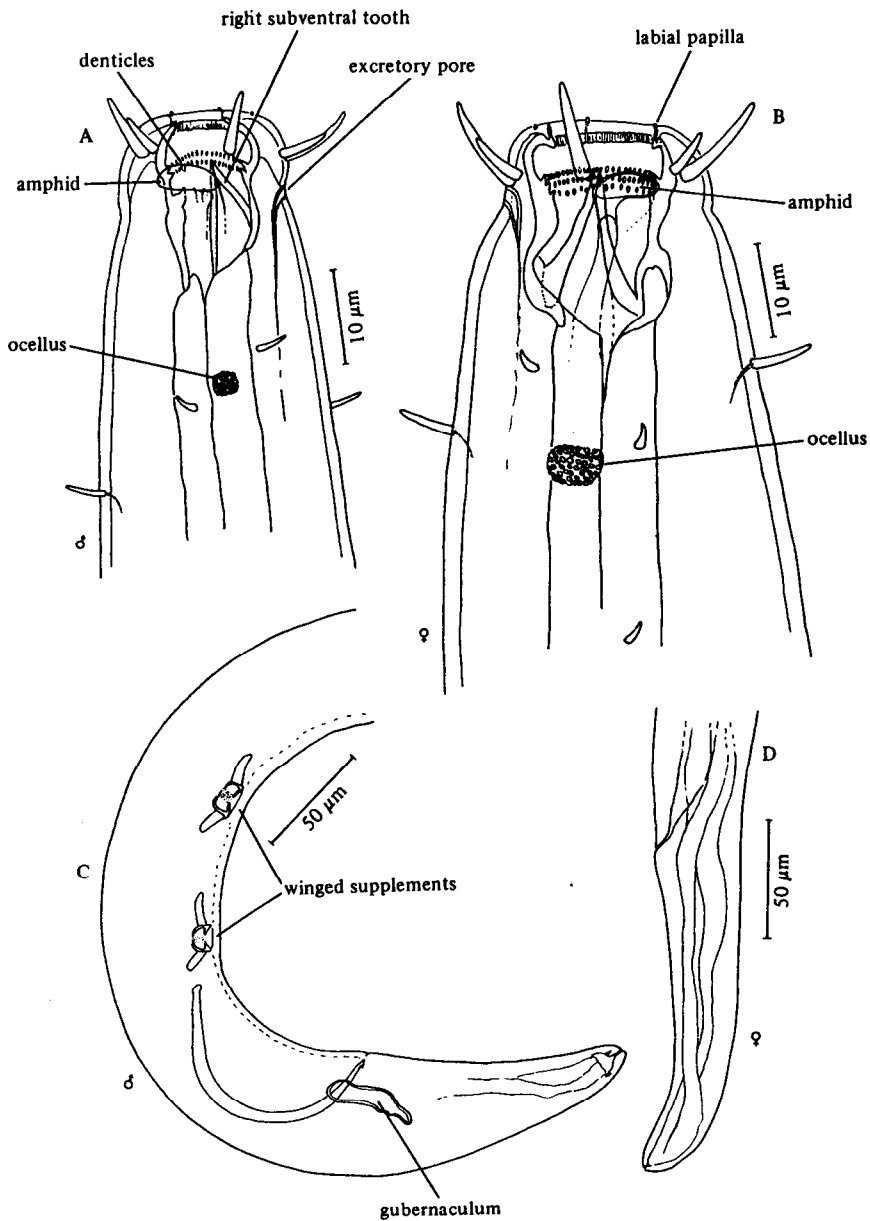


Fig. 115. *Eurystomina ornata*. A, Male head; B, Female head; C, Posterior end of male; D, Female tail. Original.