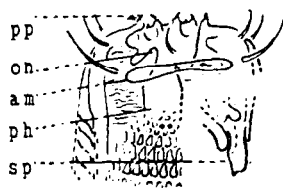


22. *Euchromadora meridiana*, n. sp. The cuticle is much like that of *Euchromadora vulgaris*, (Bast.) de Man. 400 striae. retrorse posteriorly and the reverse anteriorly, make the contour obscurely crenate. The oesophagus, cylindrical anteriorly, conoid posteriorly, has several breaks in its musculature, the most prominent being at the beginning of the final fifth of the neck. The numerous intestinal granules are small, uniform, and indistinct. The rather ellipsoidal caudal glands are arranged in an open tandem. Immediately behind the anus the tail has a diameter equal to three-fourths the anal body-diameter; thence onward it tapers but very slightly to the middle, where it begins to taper more rapidly to the terminus which is one-third as wide as the anal body-diameter. The lateral fields are somewhat distinctly cellular. The renette-cell, which pushes the intestine to one side, is twice as long as the body is wide, one-fourth to one-fifth as wide as long. Just behind the nerve-ring there is a large ampulla as long as the body is wide, and one-third as wide as long. In all the specimens examined there appears a slender seta-like appendage at the mouth of the excretory pore somewhat longer than the cuticle is thick. The ovaries are broad.



pp	.6	6.4	14.9	48 ³³	86.6	2.4mm.
on	1.	1.7	1.8	2.8	1.7	
am						
ph	.6	6.	13.1	M ⁶³	88.8	2.4mm.
sp	1.	1.8	1.8	2.2	2.	

The male tail is like that of the female, but more uniformly tapering, with less of a diminution just behind the anus. The strongly arcuate, sub-slender, rather strong and tapering spicula, somewhat cephalated at the tapered distal ends, are one and two-thirds times as long as the anal body-diameter, and lie with their proximae slightly ventral to the body-axis. There are two, more or less separate accessory pieces, each in two parts, one behind the spicula; the other in front or alongside, the front part being like a reduced spiculum. The ejaculatory duct is one-fifth, the vas deferens one-half as wide as the body.

Habitat; remarks. Cape Royds; Bay. About a dozen somewhat shrunken specimens, the two sexes occurring in about equal numbers.