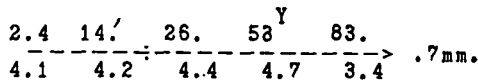
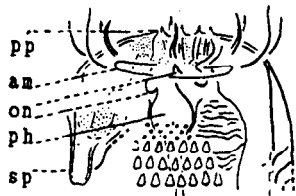


21. *Euchromadora denticulata*, n. sp. Striae about 400, resolvable into basketwork-like markings of a rather obscure character on the anterior part of the neck. The lips are subdistinct. At the nerve-ring the oesophagus has a diameter equal to two-fifths the corresponding diameter of the neck, but swells posteriorly to three-fourths the corresponding diameter. In the posterior swelling the lining is somewhat expanded.



neck. The lips are subdistinct. At the nerve-ring the oesophagus has a diameter equal to two-

fifths the corresponding diameter of the neck, but swells posteriorly to three-fourths the corresponding diameter. In the posterior swelling the lining is somewhat expanded.

The dimly seen pyloric collum is one-third as wide as the body. Intestinal granules are scarce. The ellipsoidal caudal glands occur in a close tandem opposite the anus and in the anterior fourth of the rather massive tail. The caudal setae, six ventro-submedian, and six dorso-submedian, are slender, stiff, somewhat cylindroid, sub-acute, and one-sixth as long as the anal body-width. The renette-cell, two-thirds as long as the body is wide and one-third as wide as long, empties through a pore opposite the nerve-ring. In both the specimens examined there appears a slender seta-like appendage (?) at the mouth of the excretory pore. The female reproductive organs are double and symmetrical, and probably reflexed.

Habitat; remarks. Cape Royds. Two females, in fair condition.