

Enoplus schulzi Gerlach, 1952
(Fig. 45)

Description. Body length 1.3–1.6 mm. Maximum diameter 45–56 μm ($a = 23\text{--}32$). Cuticle smooth. Six longer cephalic setae three-fifths of h.d. long, remaining four only slightly shorter. Amphids large, almost one-third of h.d. wide, situated on posterior border of cephalic capsule. Mandibles expanded in the middle but not bilobed anteriorly. Tail conical and pointed 1–1.6 a.b.d.

No rows of setae between supplement and cloaca in male. Gubernaculum simple, small, paired. Spicules smooth, simple, 62–63 μm (1.9 a.b.d.).

Supplement L-shaped, 22 μm , level with proximal ends of spicules, distal edge serrated.

Distribution. Exe estuary (gravelly sand at High Water Spring Tide level).

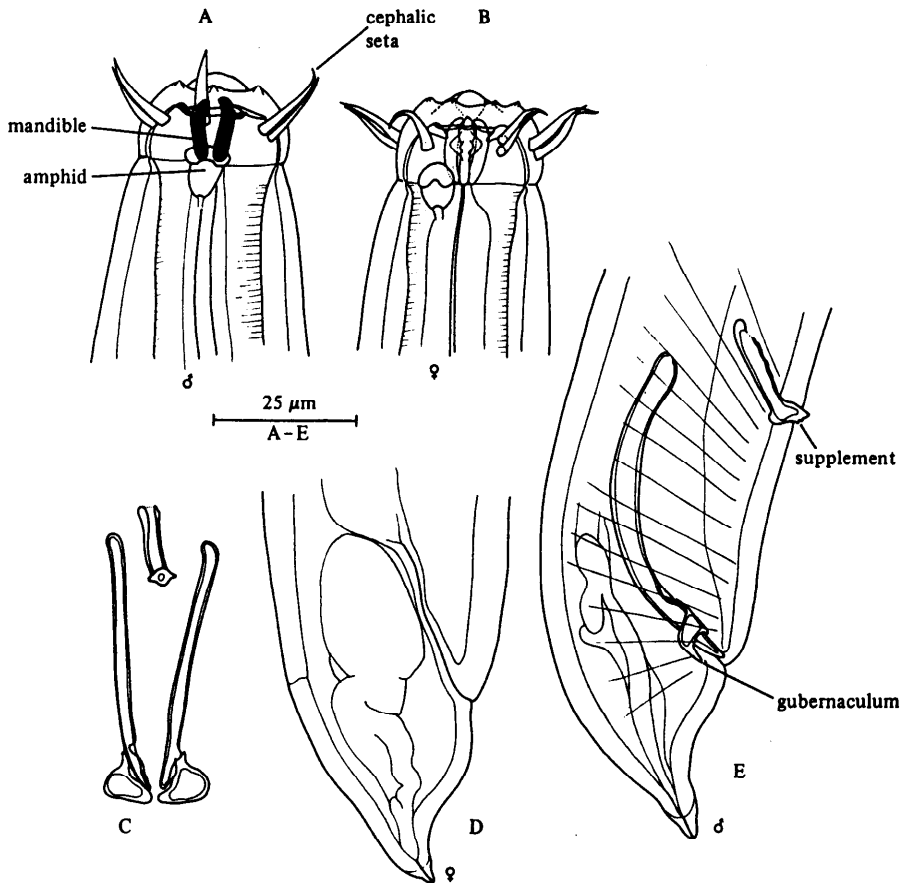


Fig. 45. *Enoplus schulzi*. A, Male head; B, Female head; C, Ventral view of spicules, gubernaculum and supplement; D, Female tail; E, Male tail. Original.