

Enoplolaimus vulgaris De Man, 1893

(Fig. 53A, B)

Description. Body length 3.1–5.6 mm ($a = 55\text{--}75$). Cuticle finely striated. Long lateral cephalic setae 1.6–1.8 h.d., longer submedian setae a little shorter, shorter submedian setae about two-thirds as long. Male with eight cervical setae arranged in pairs of unequal length, the longest about two-thirds of h.d. Female with four short cervical setae. Tail a little more than 4 a.b.d.

Spicules arcuate, $55\ \mu\text{m}$ long.

Gubernaculum with dorsally directed apophysis. Supplement 2.5–3.5 a.b.d. in front of cloaca.

Vulva at 54% of body length.

Distribution. Falmouth (intertidal sand).

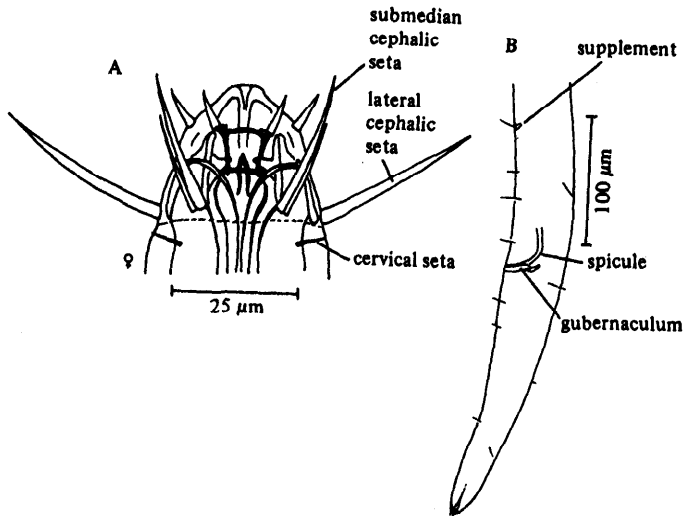


Fig. 53. *Enoplolaimus vulgaris*. A, Female head (from De Man, 1893); B, Male tail (from Riemann, 1966).