

Enoplolaimus notopropinquus n. sp.

Fig. 37 a, b

Locality and material. — Falkland Islands, St. 51: 3♂♂, 1♀, 2 juv.

Dimensions: ♂

Total length	= 3,925 mm.,	$\alpha = 28,44$
Max. thickness	= 0,138 mm.,	$\beta = 4,906$
Oesophagus	= 0,800 mm.,	$\gamma = 12,08$
Tail	= 0,325 mm.	

♂

Total length	= 3,750 mm.,	$\alpha = 34,72$
Max. thickness	= 0,108 mm.,	$\beta = 5,0$
Oesophagus	= 0,750 mm.,	$\gamma = 12,5$
Tail	= 0,300 mm.,	

♀

Total length	= 3,566 mm.,	$\alpha = 27,43$
Max. thickness	= 0,130 mm.,	$\beta = 4,46$
Oesophagus	= 0,800 mm.,	$\gamma = 12,43$
Tail	= 0,287 mm.,	$V = 56,1 \%$
Vulva	= 2,000 mm.	

Juv.

Total length	= 3,890 mm.,	$\alpha = 26,3$
Max. thickness	= 0,148 mm.,	$\beta = 4,7$
Oesophagus	= 0,820 mm.,	$\gamma = 11,97$
Tail	= 0,325 mm.	

Juv.

Total length	= 3,590 mm.,	$\alpha = 24,3$
Max. thickness	= 0,148 mm.,	$\beta = 4,8$
Oesophagus	= 0,750 mm.,	$\gamma = 10,56$
Tail	= 0,340 mm.	

This species is in its general shape, especially also in the arrangement of the cephalic bristles and in the shape of the tail, so similar to the European *Enoplolaimus propinquus* DE MAN 1922, that it must be sufficient to point out the subtle differences from that species.

1. Head not so strongly thinned and 2. the front end bristles shorter and more clumsy.
3. According to DE MAN the lateral cephalic bristles of *E. propinquus* are shorter than the submedially situated bristles, in the Falkland species, however, they are of about the same length as these.
4. The submedially situated hairs behind the cephalic bristles are relatively shorter and more slender than in the European species.
5. In the species of comparison the spicules before the middle seem to be more slender and curved behind.
6. In the new form the accessory pieces are, contrary to the European species, provided distally with 2 fish-hook-like spines situated behind each other.

St. 51. Falkland Islands. Port William. 51° 40' S. — 57° 42' W. Sand. 22 m. 3. 9. 1902.

Number of species: 45; Number of specimens found: 245.

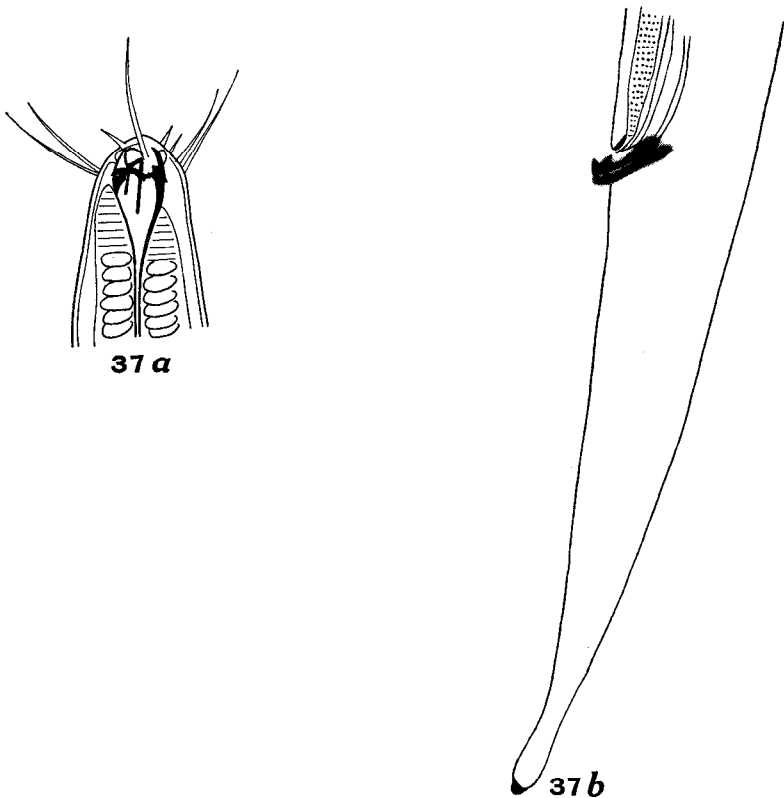


Fig. 37. *Enoplolaimus notopropinquus* n. sp. a. Anterior end, b. Tail, $\times 270$