

Enoplolaimus longicaudatus (Southern, 1914)
(Fig. 53C, D)

Description. Body length 2.9–3.6 mm. Maximum diameter 50–76 μm ($a = 40\text{--}62$). Cuticle with fine transverse striation. Six long cephalic setae equal, about 1.3 h.d., four shorter setae about three-quarters as long. Males with a ring of six cervical setae longer than the cephalic setae. Cervical setae short in female. *Tail very long* (about 9.5 a.b.d.).

Spicules arcuate, 51–54 μm .

Supplement very small (6 μm) and *close to cloaca* (level with proximal ends of spicules).

Vulva at 57–62% of body length.

Distribution. Clew Bay, West Ireland (sand and shells at 44 m depth).

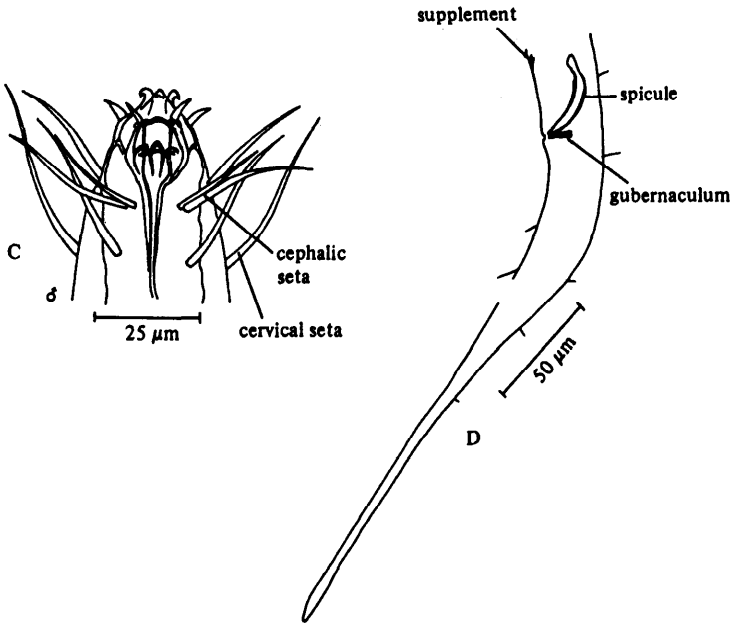


Fig. 53. *Enoplolaimus longicaudatus*. C, Male head; D, Male tail (from Southern, 1914).