

*Enoplolaimus litoralis* Schulz, 1936  
(Fig. 52)

*Description.* Body length 1.9–2.2 mm. Maximum diameter 37–68  $\mu\text{m}$  ( $a = 30$ –55). Cuticle smooth. No striation on lips. Two long lateral cephalic setae 2.9–3.0 h.d. in the male, 2.2–2.6 in the female; four longer submedian setae *about half this length*, the four shorter submedian setae about two-thirds the length of the longer. Ten long cervical setae in male, four short setae in female. Tail 4.1–5.0 a.b.d.

Spicules arcuate, 43–51  $\mu\text{m}$  long (curve).

Gubernaculum with small dorsocaudal apophysis. Supplement 2.0–2.3 a.b.d. in front of cloaca.

Vulva at 56–63% of body length.

*Distribution.* Exe estuary; Isles of Scilly (intertidal sand).

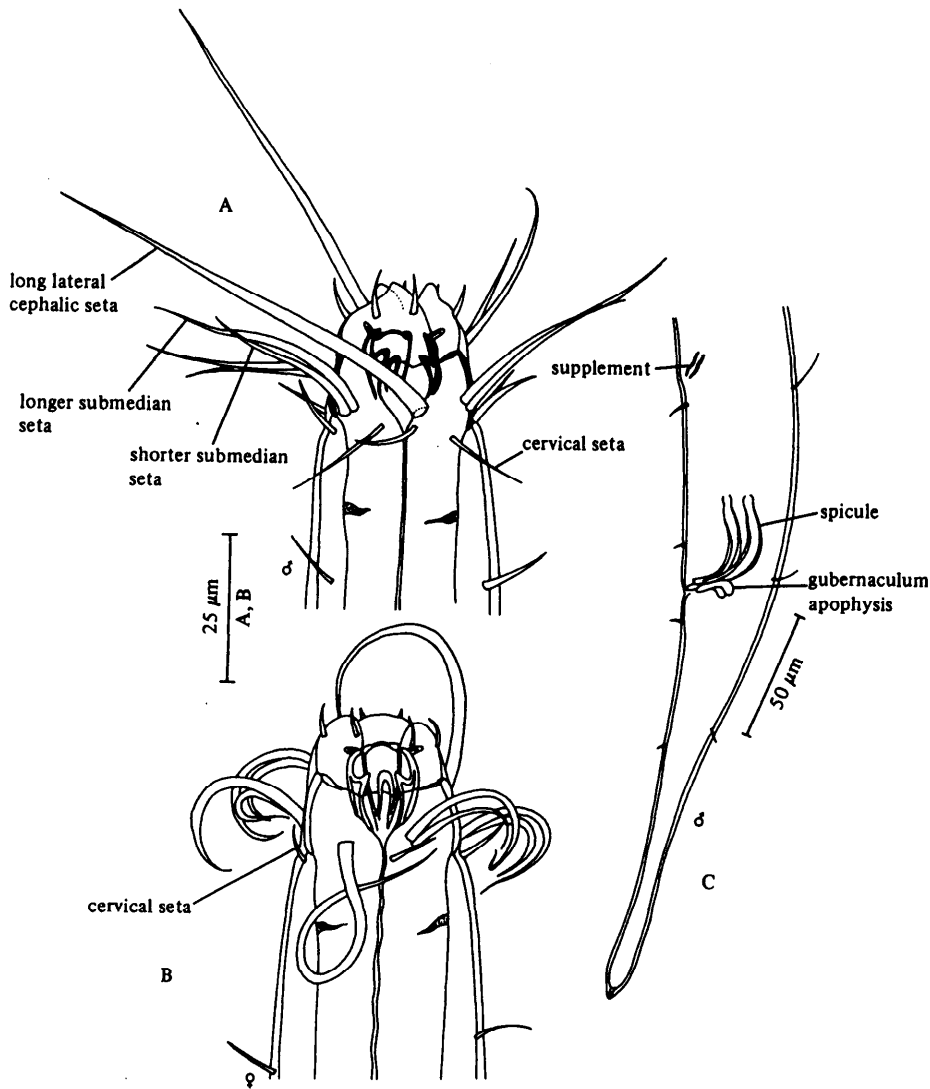


Fig. 52. *Enoplolaimus litoralis*. A, Male head; B, Female head; C, Male tail. Original.