

*Enoploides spiculohamatus* Schulz, 1932

(Fig. 48)

*Description.* Body length 2.7–2.8 mm. Maximum diameter 78–83  $\mu\text{m}$  ( $a = 34$ ). Very similar to *E. longispiculosus* except that the supplement is smaller and not so expanded at the proximal end, and is situated only one-quarter to one-third of the spicule length in front of the cloaca. Spicules 335–356  $\mu\text{m}$  long, gubernaculum length 42–45  $\mu\text{m}$ .

*Distribution.* Isle of Cumbrae, Scotland (medium coarse sand at 6 m depth).

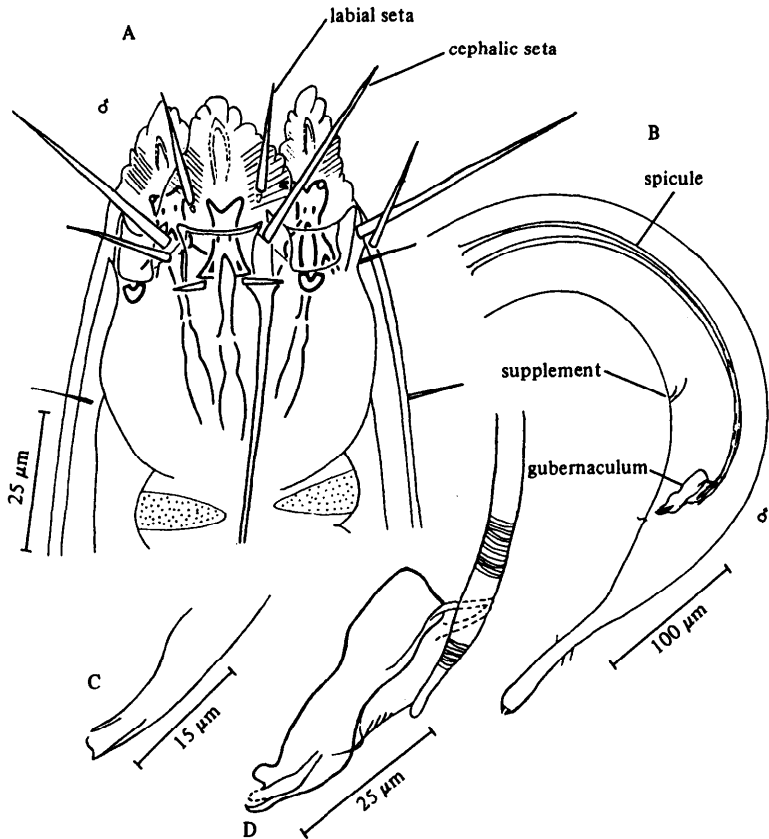


Fig. 48. *Enoploides spiculohamatus*. A, Male head; B, Male tail; C, Supplement; D, Gubernaculum and spicule tip (from Benwell, 1981).