

*Enoploides labrostriatus* (Southern, 1914)  
(Fig. 49)

*Description.* Body length 5.6–7.4 mm. Maximum diameter 132  $\mu\text{m}$  (a = 41–56). Head structures similar to other species. Unlike the previous three species the tail has long terminal setae.

Spicules very long (490  $\mu\text{m}$ ) and said to be *smooth*.

Gubernaculum paired, with wide funnel-shaped proximal ends, distal parts curved with grooves bordered by two teeth. Supplement simple, tubular, 0.3 times spicule length in front of cloaca.

*Distribution.* Clew Bay, West Ireland (sublittoral sand and shells, 44 m depth).

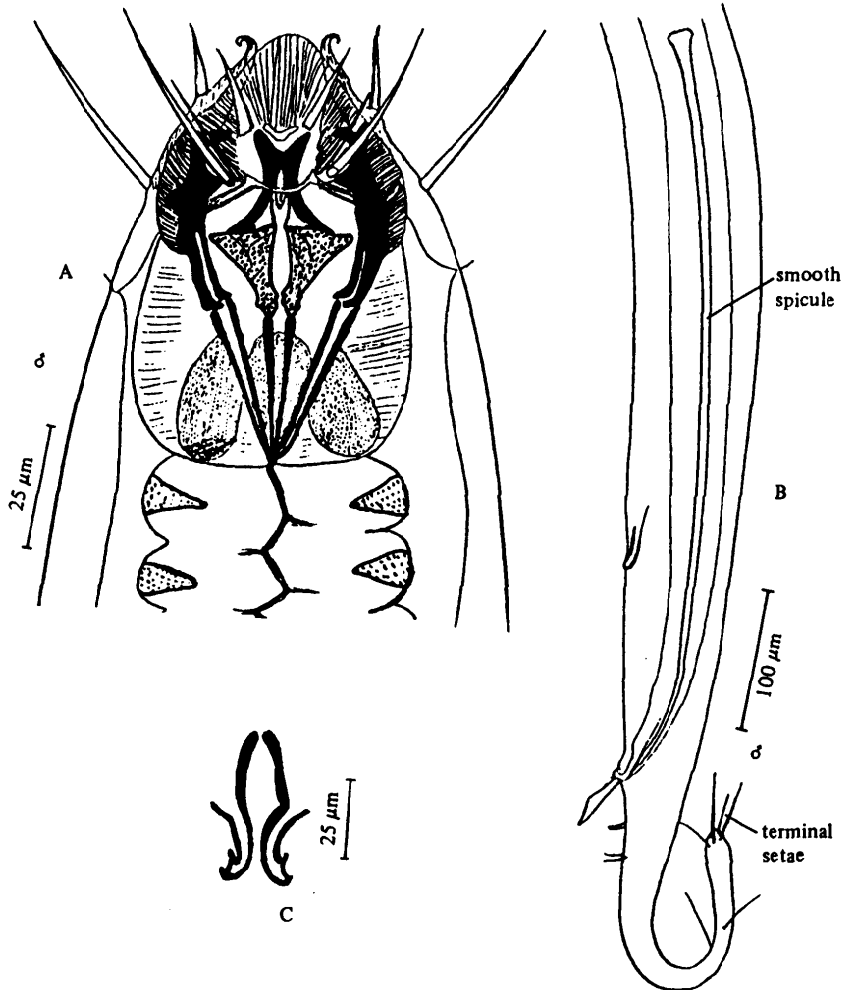


Fig. 49. *Enoploides labrostriatus*. A, Head; B, Male tail; C, Ventral view of gubernaculum (from Southern, 1914).