

Draconema cephalatum Cobb, 1913

(Fig. 170)

Description. Body length 1.5 mm. Maximum diameter 70 μm ($a = 21$). Twelve dorsal cephalic stilt setae and about 50 posterior subventral stilt setae. Numerous somatic setae throughout body. Amphids 11 μm wide, 16 μm long situated in middle of rostrum. Tail 4.5 a.b.d., conical, with setae on unstriated tip (Fig. 170F).

Spicules 90 μm (2.7 a.b.d.) as curve, arcuate. Gubernaculum short, 20 μm , rod-shaped.

Distribution. Northumberland coast, North East England (kelp holdfasts); Isles of Scilly (sublittoral shell gravel).

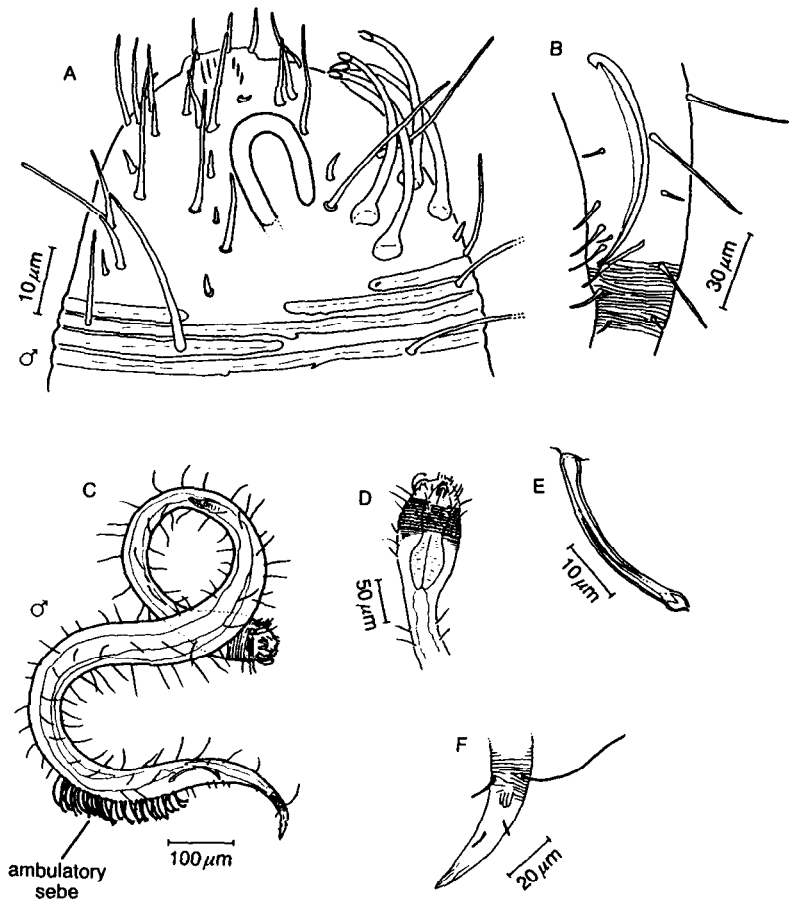


Fig. 170. *Draconema cephalatum*. A, Male head; B, Cloacal region; C, Entire male; D, Anterior end; E, Single stilt seta; F, Tail tip. Original.