

Dorylaimopsis punctata Ditlevsen, 1918
(Fig. 83)

Description. Body length 2.4–2.7 mm. Maximum diameter 64–80 μm ($a = 30\text{--}39$). Cuticle punctated with lateral differentiation beginning just posterior to amphids, extending half way down tail length and consisting of two files of dots (Fig. 83C). Six short 1.5–2 μm and four longer 7 μm much stouter cephalic setae. Four longitudinal rows of short somatic setae. Male tail with additional subventral setae on conical part (Fig. 83B). Amphids spiral, of 3 turns, 11 μm (about 0.5 c.d.) wide. Buccal cavity cylindrical with three conspicuous pointed teeth at the anterior end. Oesophagus widens posteriorly, but without a bulb. Tail conico-cylindrical with three terminal setae, 3.4–4 a.b.d.: some specimens may be found in which the cylindrical part has broken off.

Spicules 120–150 μm (1.6–2.4 a.b.d.) measured as a curve, often appearing to be double-jointed with a small ventral apophysis about one third from the distal end (Fig. 83B). Gubernaculum with long (about 50 μm) caudally directed apophyses. About 17 fine tubular precloacal supplements.

Distribution. Loch Nevis, West Scotland; Loch Striven, West Scotland; Arran Island, West Scotland; North Sea; Northumberland coast, North East England (sublittoral mud); Celtic Sea (sublittoral muddy sand).

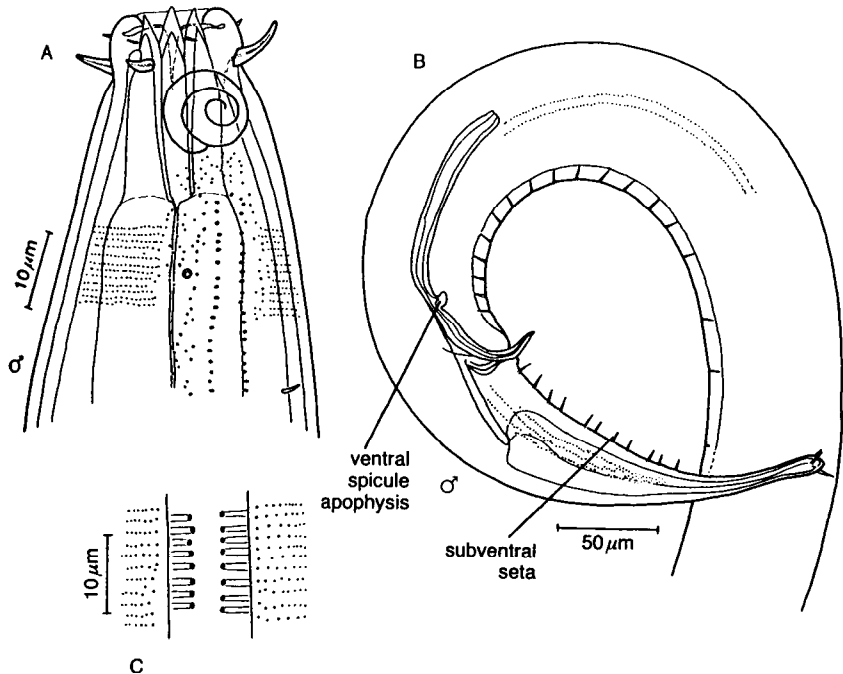


Fig. 83. *Dorylaimopsis punctata*. A, Male head; B, Male tail; C, Lateral cuticle in mid-body. Original.