

*Dolicholaimus marioni* De Man, 1888

(Fig. 72)

*Description.* Body length 4.1–4.3 mm. Maximum diameter 107–118  $\mu\text{m}$  ( $a = 36\text{--}38$ ). Cuticle smooth. Ten cephalic papillae small and rounded, the submedian pairs scarcely distinguishable as double. Buccal cavity long (115–118  $\mu\text{m}$ ) and tubular, walls heavily cuticularised. Three anterior solid teeth rather small; replacement teeth posterior to this set in juveniles. Amphids pocket-like, 10  $\mu\text{m}$  wide. Oesophagus 0.15 times body length, narrow in the middle with a pronounced elongate bulb at its base, 63  $\mu\text{m}$  wide and 133–145  $\mu\text{m}$  long. Tail the same shape in both sexes, distal two-thirds tapering, proximal third cylindrical, tip swollen, 2.4–2.9 a.b.d. long.

Spicules paired, 76  $\mu\text{m}$  long, broad, squared proximal ends, two median lamellae.

Gubernaculum paired, 45  $\mu\text{m}$  long with small caudal projection in the middle. 6–7 small conical ventral papillae in front of cloaca, sometimes associated with more or less marked elevations of the cuticle.

Ovaries paired, equal, opposed, reflexed. Vulva at 53% of body length. Eggs large and elongate, typically 254  $\times$  80  $\mu\text{m}$ .

*Distribution.* Plymouth; Isles of Scilly (intertidal algae).

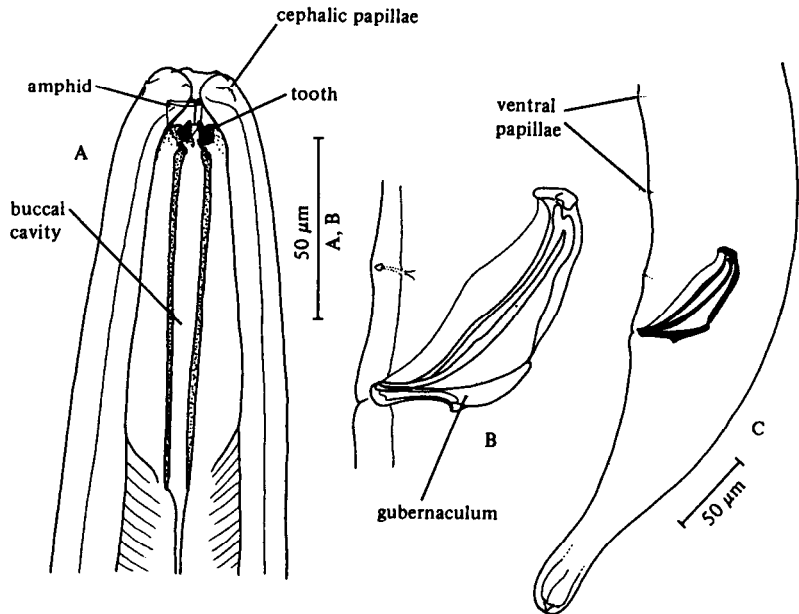


Fig. 72. *Dolicholaimus marioni*. A, Male head; B, Spicules and gubernaculum; C, Male tail. Original.