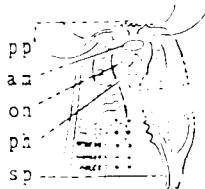


18. *Spilophora serrata*, n. sp. Striae about 500, interrupted by the lateral wings, which occupy a space equal to one-fourth the body diameter. The secondary elements of the cuticle appear as dots on the head, and produce a punctate appearance there. Four rather irregular pairs of sub-cephalic setae, like the cephalic setae, but shorter, mated one in front of the other, occur at a distance from the lips equal to twice the width of the head. There are few cervical setae. The vestibule of the pharynx is longitudinally striated. This is one of the few species of *Spilophora* in which the amphids can be plainly seen. The rather thick-walled intestine soon becomes three-fourths as wide as the body, and is ten to twelve cells in girth, the cells containing numerous uniform, colorless granules nearly equal in diameter to the width of one of the annules of the cuticle. The posterior lip of the anus is elevated. The terminus of the tail is about one-sixth as wide as its base. The two broadly saccate caudal glands are arranged in close tandem opposite the anus and in the anterior fourth of the tail. Their ampullae are not distinct. The third caudal gland (?), just behind the anus, is a strongly staining cell, with a duct, or connection, that reaches to near the terminus. The non-granular renette cell, one body-width behind the neck, twice as long as the body is wide, has a small companion-cell in its rear. The excretory pore is probably near the lips. Opposite the renette cell there are two, and probably three, ellipsoidal cells in each lateral field, each cell being one-third as long as the body is wide, and one-third as wide as long. These cells constitute two pairs,—or three. The eggs are about one and one-half times as long as the body is wide, and two thirds as wide as long, and occur in the uteri one at a time. Each of the medium sized, tapering ovaries reaches half way back to the vulva, and contains about fifteen ova arranged single file.



pp	1.	9.5	15.3	46 <sup>30</sup>	86.5	1.1mm.
a	1.5	2.6	2.9	3.4	2.5	
o						.9mm.
p	1.	10.8	17.1	59	86.	
s	1.5	2.9	3.4	3.7	2.9	

The strong, rather uniform, colorless spicula are cephalated by a constriction and are obliquely truncated at the distal end, where there are two or three exceedingly minute teeth. The subsleender, rather strong and simple accessory pieces recede a little from the spicula. Of the slightly elevated, somewhat protrudable supplementary organs, whose width is about equal to that of two annules, the hindermost is near the anus. They are farther apart anteriorly, the distance between the first and second equaling one-third of the body width, that between the second and third, one and one-half times the body width. The ejaculatory duct is one-third as wide as the body—the vas deferens and testis one-half. At least one pair of glands of the kind seen in the males of *Euchromadora* occurs nearly twice as far in front of the anus as the terminus is behind it; each gland-cell is fusiform, one-half as long as the body is wide, and one-half as wide as long. Both of the males examined had a ventral swelling near the center of the tail, as long as the corresponding body diameter.

Habitat; remarks. Bay, Cape Royds. The two females and two males studied were in good condition.

Habitat; remarks. Bay, Cape Royds. The two females and two males studied were in good condition.