

Chromaspirina multipapillata Jayasree and Warwick, 1977
(Fig. 153)

Description. Body length 2.2–2.5 mm. Maximum diameter 36–40 μm ($a = 59$ –63). Six small anterior 2–3 μm and four 12–14 μm (0.5 h.d.) cephalic setae. Somatic setae absent. Amphids 12–12.5 μm (0.5 c.d.). Buccal cavity with a small dorsal and two smaller subventral teeth. Oesophagus enlarged posteriorly forming a weakly-developed bulb. Tail 2.2–2.6 a.b.d., conical.

Spicules 35–36 μm (0.9–1.0 a.b.d.), arcuate, proximally cephalate, with ventral ala. Gubernaculum proximally free from spicules. 52–60 more or less equally spaced tubular precloacal supplements, the anteriormost 420–450 μm anterior to cloaca.

Distribution. Firth of Clyde, West Scotland (intertidal sand).

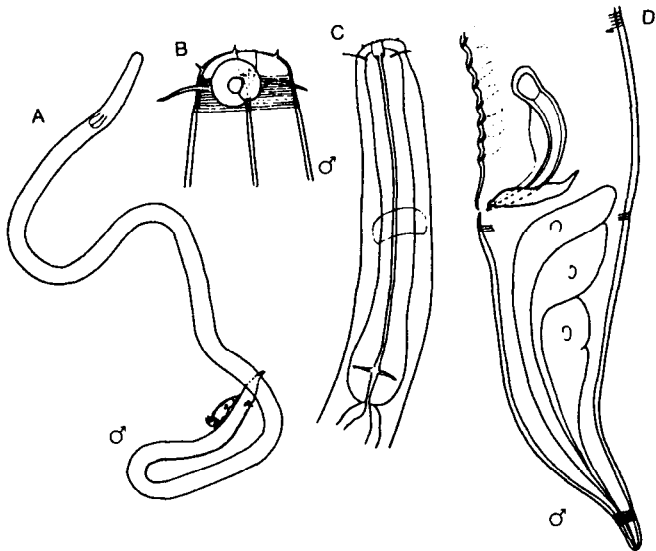


Fig. 153. *Chromaspirina multipapillata*. A, Entire male; B, Male head; C, Anterior region; D, Male tail. From Jayasree and Warwick (1977).