

*Chromadorina granulopigmentata* (Wieser, 1951)  
(Fig. 49)

*Description* (from Wieser, 1951). Body length 0.6–0.7 mm ( $a = 23$ ). Cephalic setae  $6.5 \mu\text{m}$  (0.7 h.d.). Amphids slit-like. Granular pigment spots 2 h.d. from anterior end, bordered by two pairs of setae (Fig. 49A). Oesophageal bulb without thickened cuticularised lining (Fig. 49B). Tail 4.5 a.b.d. in male, 6 a.b.d. in female.

Cup-shaped precloacal supplements absent, but two large and two smaller precloacal setae present (Fig. 49C).

*Distribution*. Plymouth, South West England (intertidal seaweeds).

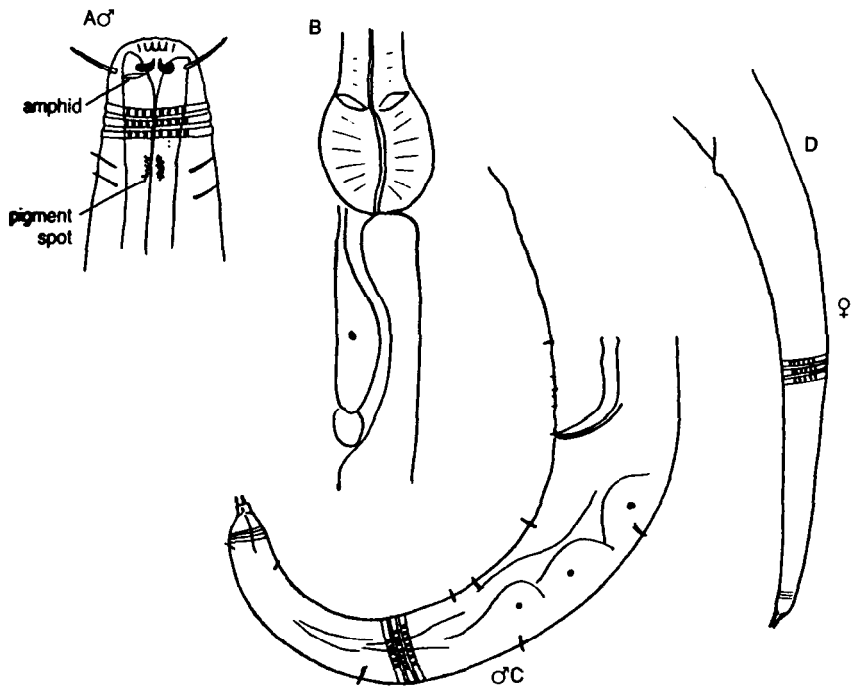


Fig. 49. *Chromadorina granulopigmentata*. A, Male head; B, Oesophageal bulb and ventral gland; C, Male tail; D, Female tail. From Wieser (1951).