

*Chromadorina cervix* (Wieser, 1951)  
(Fig. 48)

*Description* (from Wieser, 1951). Body length 0.5–0.6 mm ( $a = 30\text{--}35$ ). Cephalic setae  $4.5\ \mu\text{m}$  (0.6–0.7 h.d.). Four pairs of setae 0.5 c.d. long situated 2.5–3.0 h.d. from anterior end (Fig. 48A). Pigment spots not visible. Three solid teeth of equal size. Oesophagus with posterior bulb not depicted with thick cuticular lining. Tail 4 a.b.d. in male, 6 a.b.d. in female.

Spicules proximally cephalate. Seven cup-shaped precloacal supplements, anteriormost 5 a.b.d. in front of cloaca.

*Distribution*. Plymouth, South West England (intertidal seaweeds).

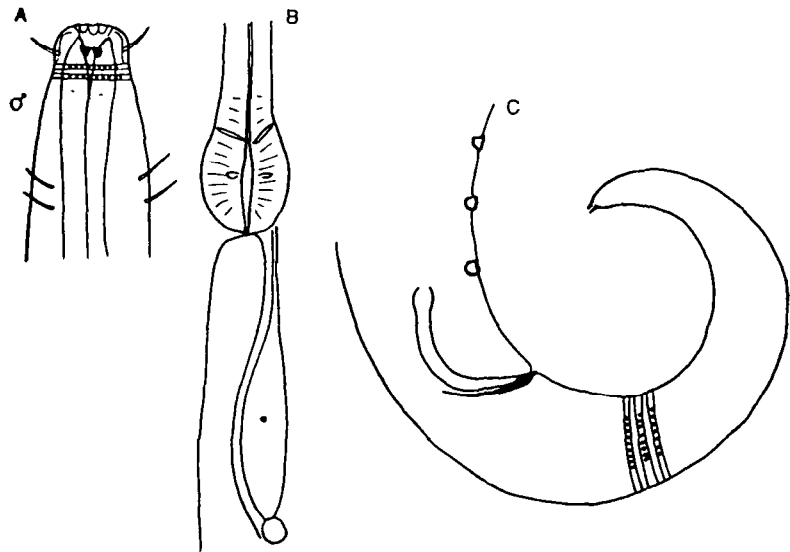


Fig. 48. *Chromadorina cervix*. A, Male head; B, Oesophageal bulb and ventral gland; C, Male tail. From Wieser (1951).