

Bolbolaimus teutonicus Riemann, 1966
(Fig. 176)

Description (from Riemann, 1966). Body length 1.1–1.2 mm. Maximum diameter 26–28 μm ($a = 41\text{--}46$). Cuticle in cervical region with faint longitudinal markings. Six 3.5 μm anterior and four 5.5 μm (0.3–0.4 h.d.) posterior cephalic setae. A circle of short 5 μm setae 14–16 μm posterior to amphids, but apart from terminal setae on the tail somatic setae absent. Amphids 9–12 μm (0.5–0.6 c.d.) wide, slightly transversely oval, 0.5 h.d. posterior. Buccal cavity with solid dorsal and smaller subventral teeth, with a small additional cavity containing another tooth posterior to buccal bulb. Conspicuous peribuccal bulb (Fig. 176B). Tail about 4 a.b.d.

Spicules 27–28 μm (1.2 a.b.d.), slightly arcuate with proximal oval cephalisation. Gubernaculum 18–19 μm , parallel to spicules. Seven minute tubular precloacal supplements.

Vulva at 57% of body length.

Distribution. Loch Ewe, West Scotland (intertidal sand).

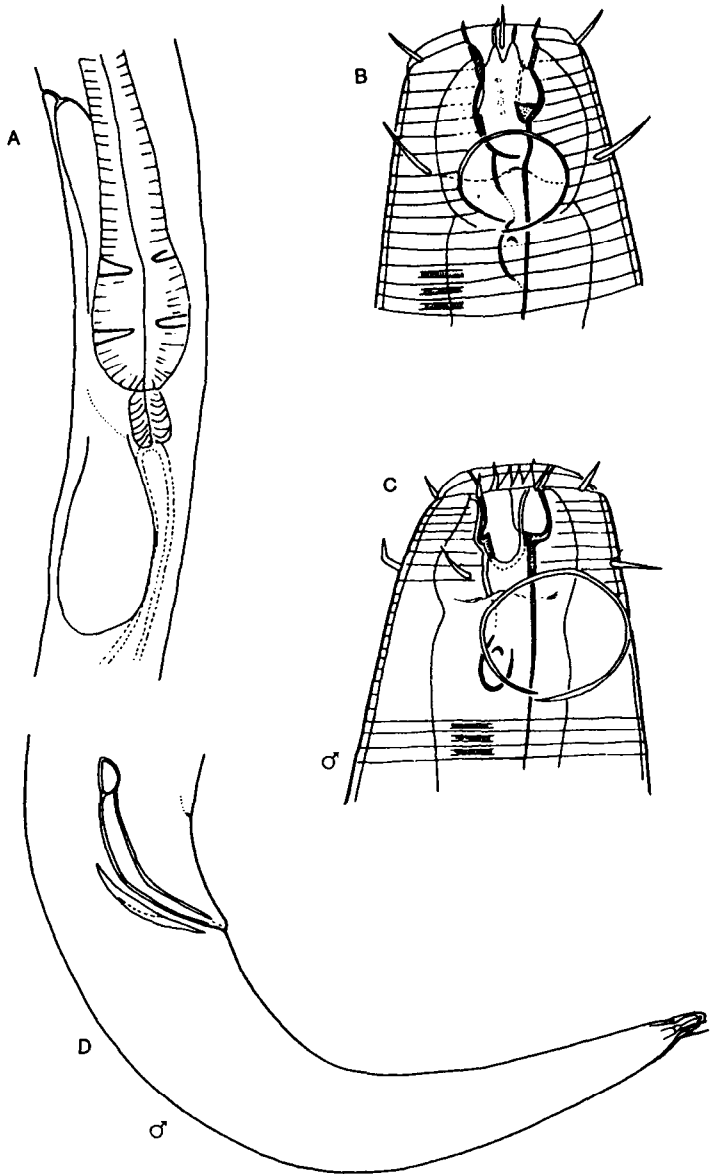


Fig. 176. *Bolbolaimus teutonicus*. A, Region of oesophageal bulb; B, Juvenile head; C, Male head; D, Male tail. From Riemann (1966).